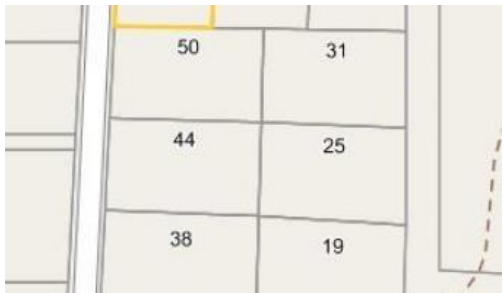
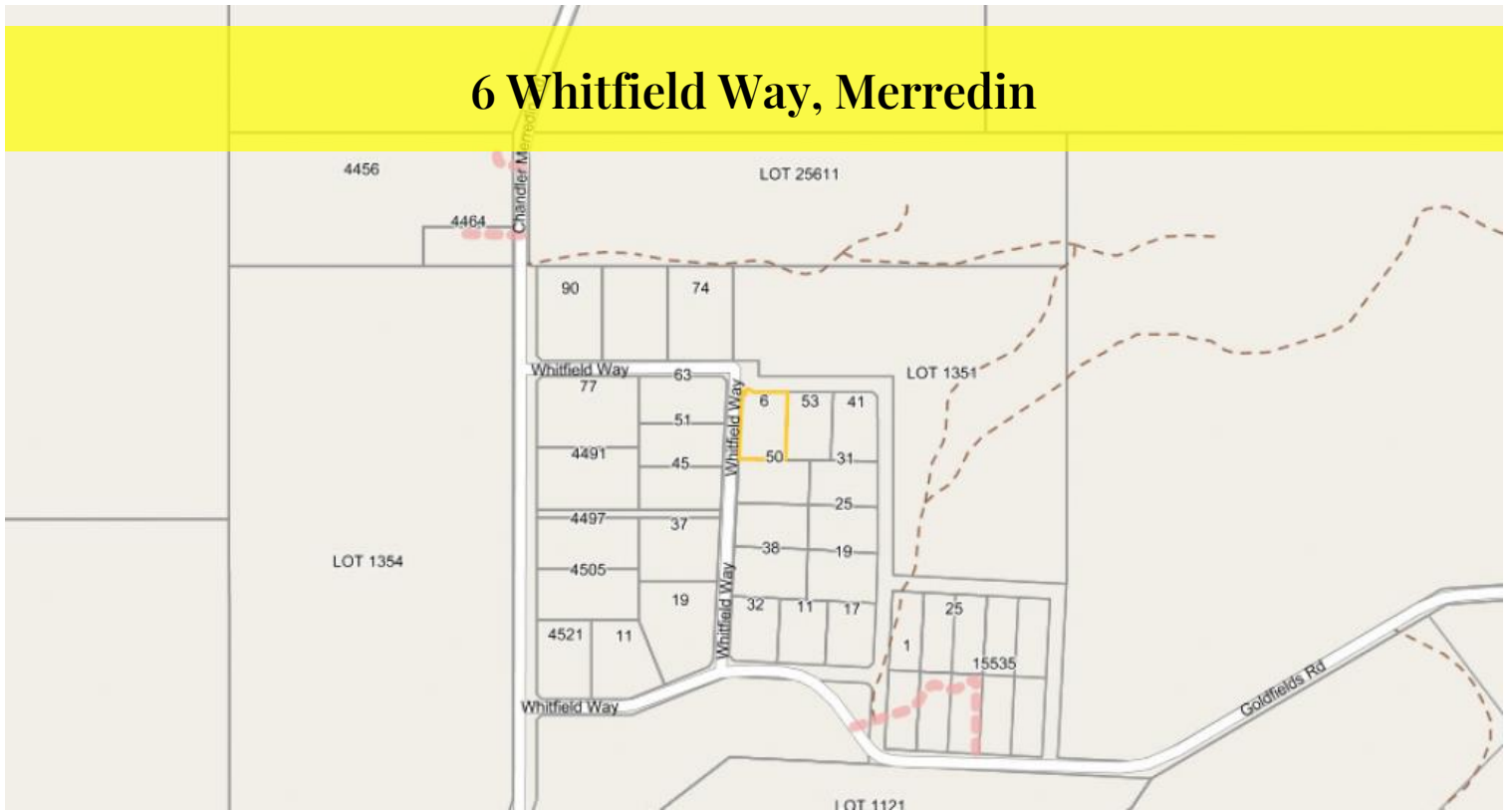


6 Whitfield Way, Merredin



1.24 Acres and priced to sell

OPEN to OFFERS

What a great spot to build your dream home! A spacious corner block in the beautiful Whitfield Estate!

This block corners Whitfield and Maiolo Way and has an uninterrupted view of native bushland across the road.

With 5039m2 (1.24 acres) to build on, there is room for everyone's ideas and projects.

This big block is priced to sell – Get in quick!!!

Power and water located at boundary.

For all enquiries please call Sharon Johnson on 0427 949 331.

Disclaimer: every precaution has been taken to establish the accuracy of this information. The details should not be taken as a representation in any respect on the part of the Seller or its agent. Interested parties should contact the nominated person or office for full and current

Price	\$65,000 ONO!
Property Type	Residential
Property ID	1001
Land Area	5,039 m2

Agent Details

Sharon Johnson – 08 9574 2917

Office Details

Toodyay
100 Stirling Tce Toodyay WA 6566
Australia
08 9574 2917



The above information provided has been furnished to us by the vendor/s. We have not verified whether or not that information is accurate and do not have any belief in one way or the other in its accuracy. We do not accept any responsibility to any person for its accuracy and do no more than pass it on. All interested parties should make and rely upon their own inquiries in order to determine whether or not this information is in fact accurate.