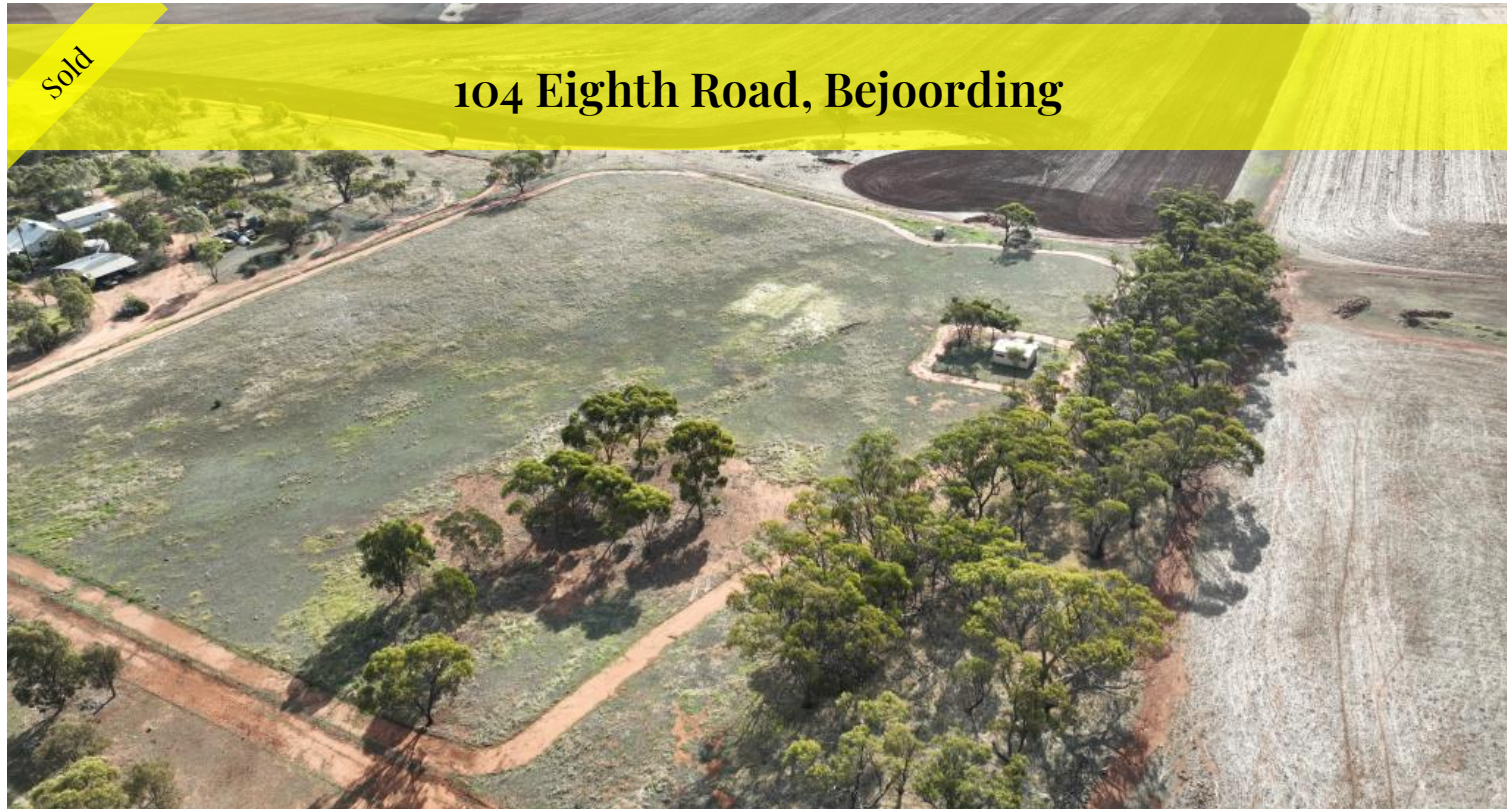


Sold

## 104 Eighth Road, Bejoording



### Corner Block in Bejoording

Rolling Hills & Spectacular Views !!

This beautiful 9ac (approx) pasture block has a broad fringe of established York gums and stunning views. It is situated at almost the highest point in Bejoording at the end of Eighth Road, overlooking a large farm. It is the most peaceful spot you can imagine - the perfect place to wind down and relax on the weekend.

Soils are rich red loams, and the paddock has already been picked clean of rocks! The hard yards have been done so you can concentrate on deciding where to locate your dream home. Anywhere you choose will have a fantastic outlook.

Infrastructure includes a 6.4m x 4.5m and 2.6m x 1.74m sheds, which are fenced off and a low-producing bore suitable for watering livestock.

For more information or to book an inspection, contact the listing agent below!

Sam Woodford | [sam@asktonym.com.au](mailto:sam@asktonym.com.au) | 0408 465 029

Disclaimer: every precaution has been taken to establish the accuracy of this information. The details should not be taken as a representation in any respect on the part of the Seller or its agent. Interested parties

9.00 ac

<b>Price</b>	SOLD for \$185,000
<b>Property Type</b>	Residential
<b>Property ID</b>	1445
<b>Land Area</b>	9.00 ac

### Agent Details

Sam Woodford - 0408 465 029

### Office Details

Tony Maddox Real Estate  
100 Stirling Tce Toodyay WA 6566  
Australia  
08 9574 2917



should contact the nominated person or office for full and current details.

The above information provided has been furnished to us by the vendor/s. We have not verified whether or not that information is accurate and do not have any belief in one way or the other in its accuracy. We do not accept any responsibility to any person for its accuracy and do no more than pass it on. All interested parties should make and rely upon their own inquiries in order to determine whether or not this information is in fact accurate.